

What's in the Box

Overview

Recharge Your Power Station

Powering Your Device

Light

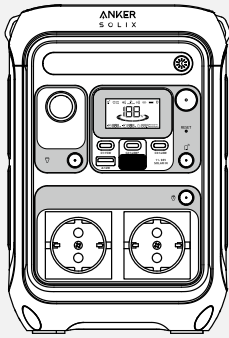
The Anker App for Smart Control

Install Firmware Update

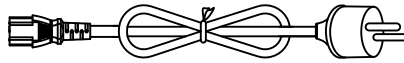
FAQ

Specifications

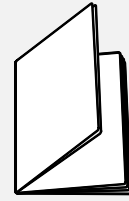
What's in the Box



Anker SOLIX C300 Portable Power Station

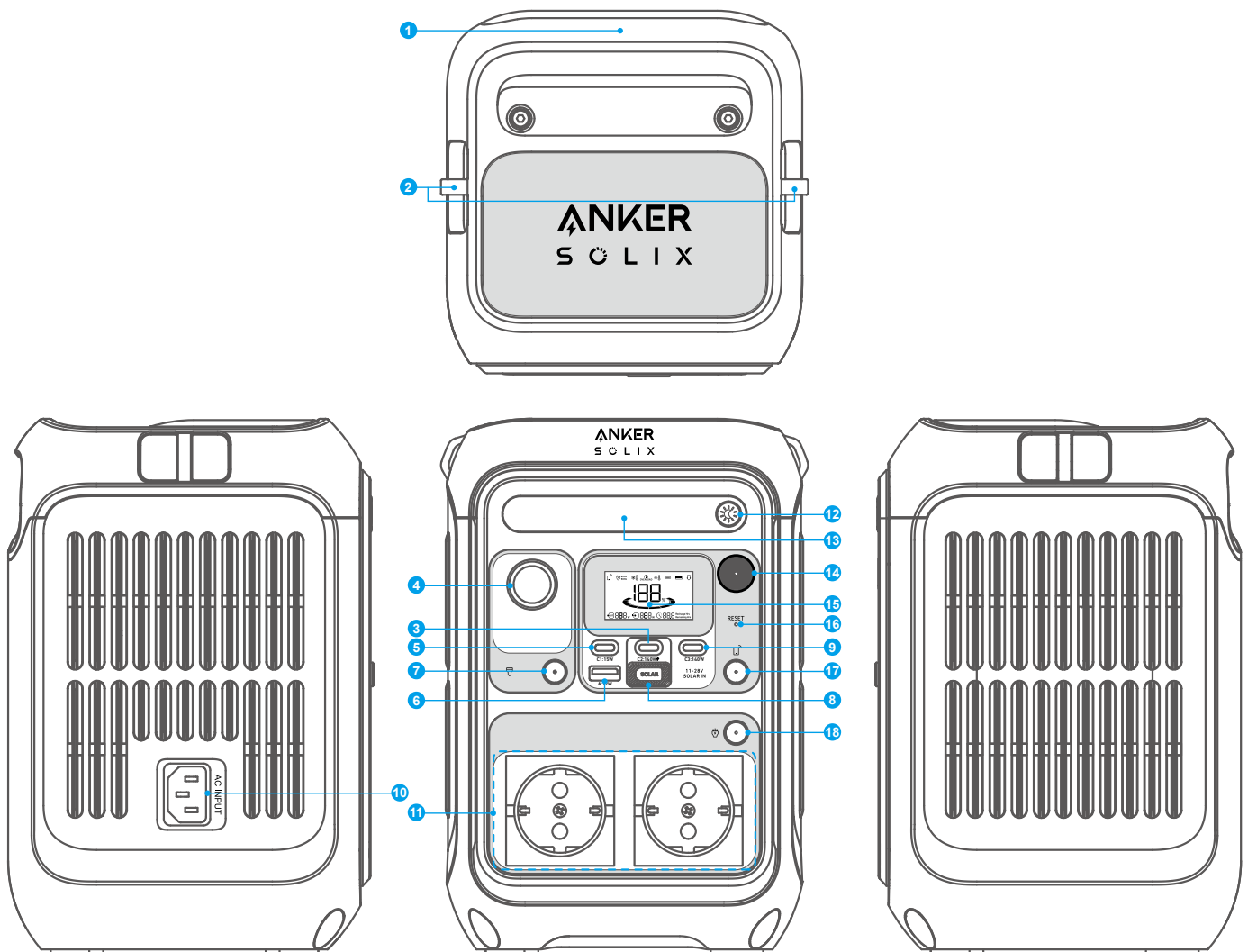


AC Charging Cable



Important Safety Instructions

Overview



- 1 Handle
- 2 Strap Attachment*
- 3 140W USB-C Input/Output Port
· [⚡] indicates a bidirectional interface.
- 4 Car Socket
- 5 15W USB-C Output Port
- 6 12W USB-A Output Port

7 Car Socket On/Off Button

8 Solar Input and Car Input

- The sliding cover design is intended to prevent this port and the 140W USB-C Input/Output Port from being used simultaneously.

9 140W USB-C Output Port

10 AC Input Port

11 AC Output Ports

12 Ambient Light On/Off Button

13 Ambient Light

14 Main Power Button

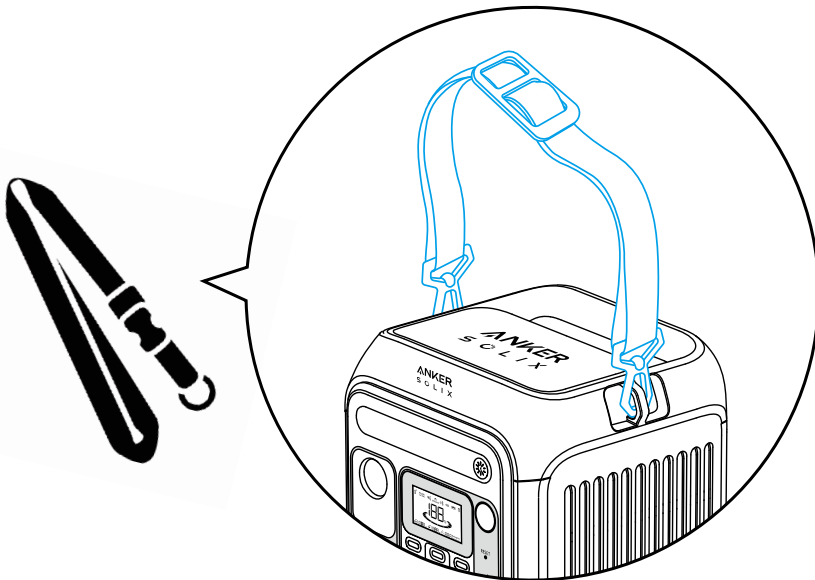
15 LCD Screen

16 Reset

17 IoT Button

18 AC Output On/Off Button

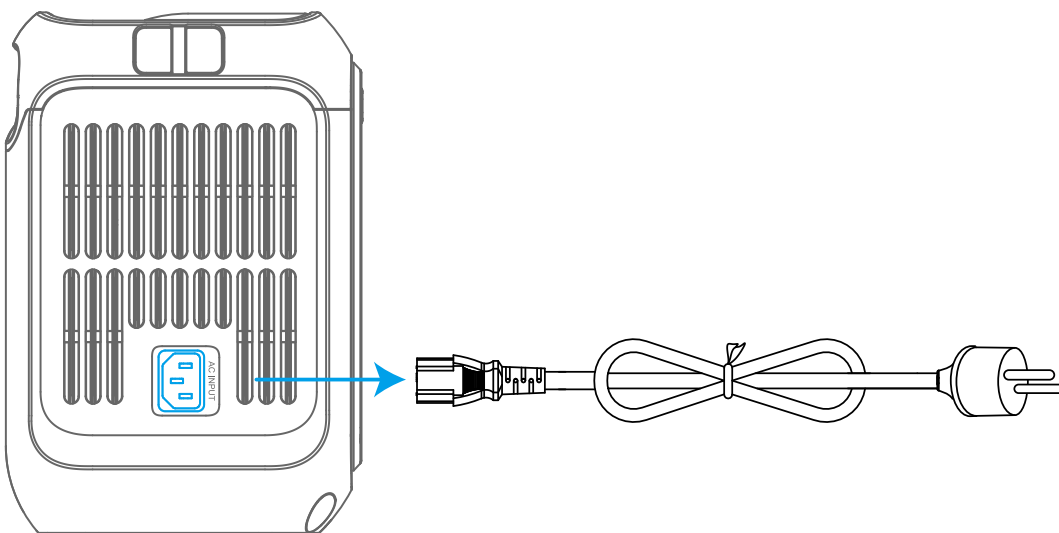
💡 *The strap attachments are designed for Anker SOLIX adjustable straps (sold separately).



Recharge Your Power Station

AC Recharging (330W Max)

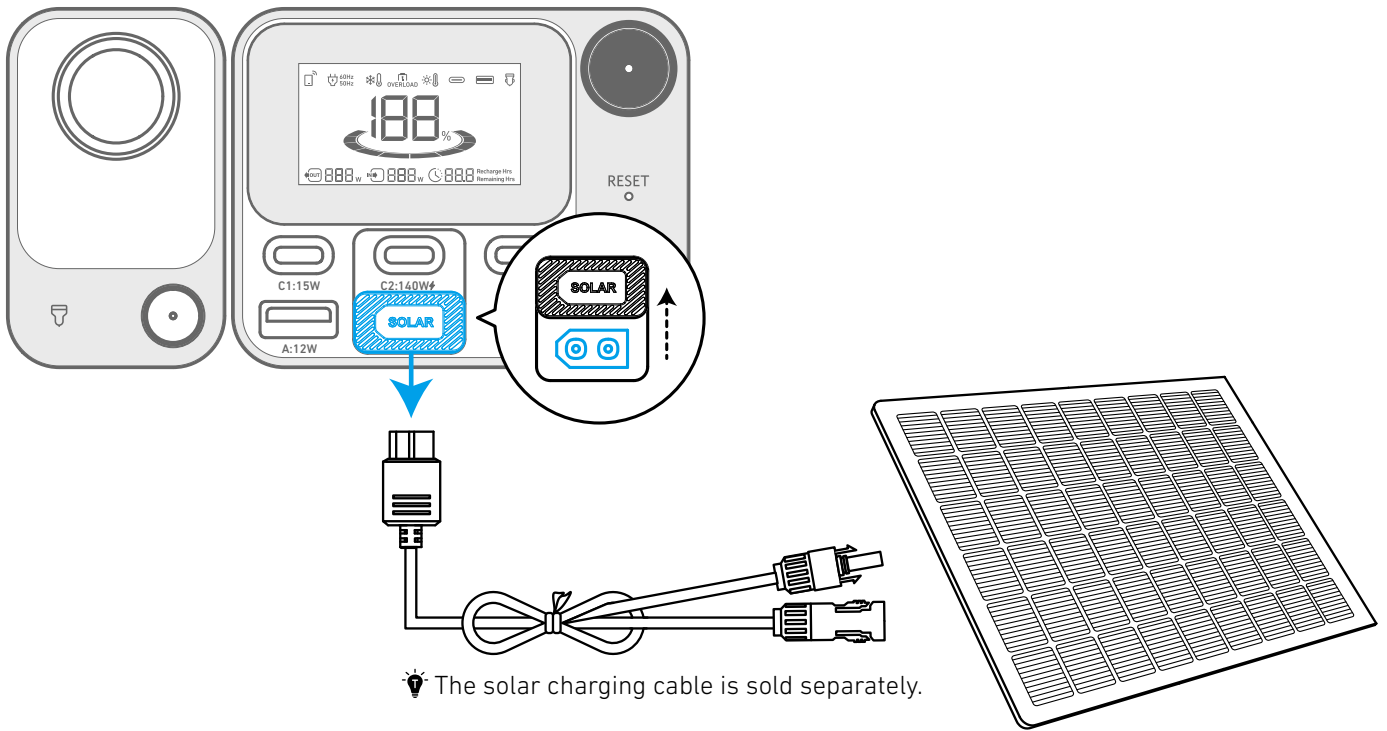
Recharge your power station by connecting to a wall outlet with the AC charging cable.



Solar Panel Recharging (100W Max)

Recharge your power station with a maximum solar input of 100W by connecting up to one Anker 100W/60W Solar Panel as shown in the figure with a solar charging cable.

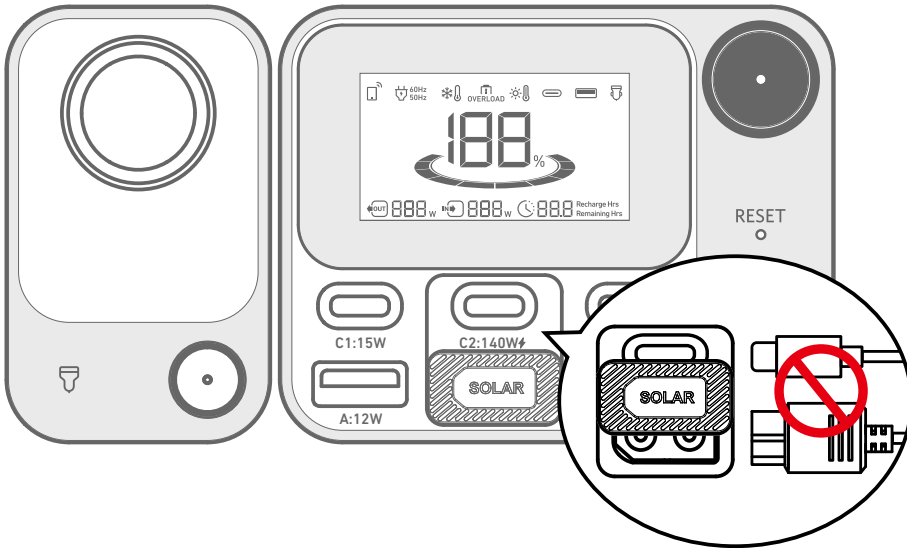
💡 The voltage of the solar panel should be 11V-28V, otherwise it will damage the power station.



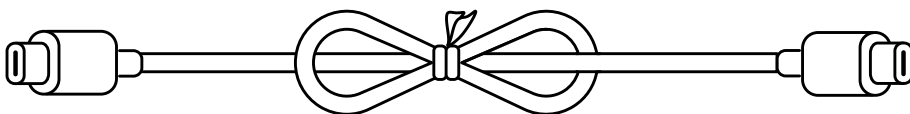
USB-C Recharging (140W Max)

Recharge your power station by connecting to a wall adapter with a USB-C cable.

💡 USB-C recharging and XT-60 recharging cannot be used simultaneously.

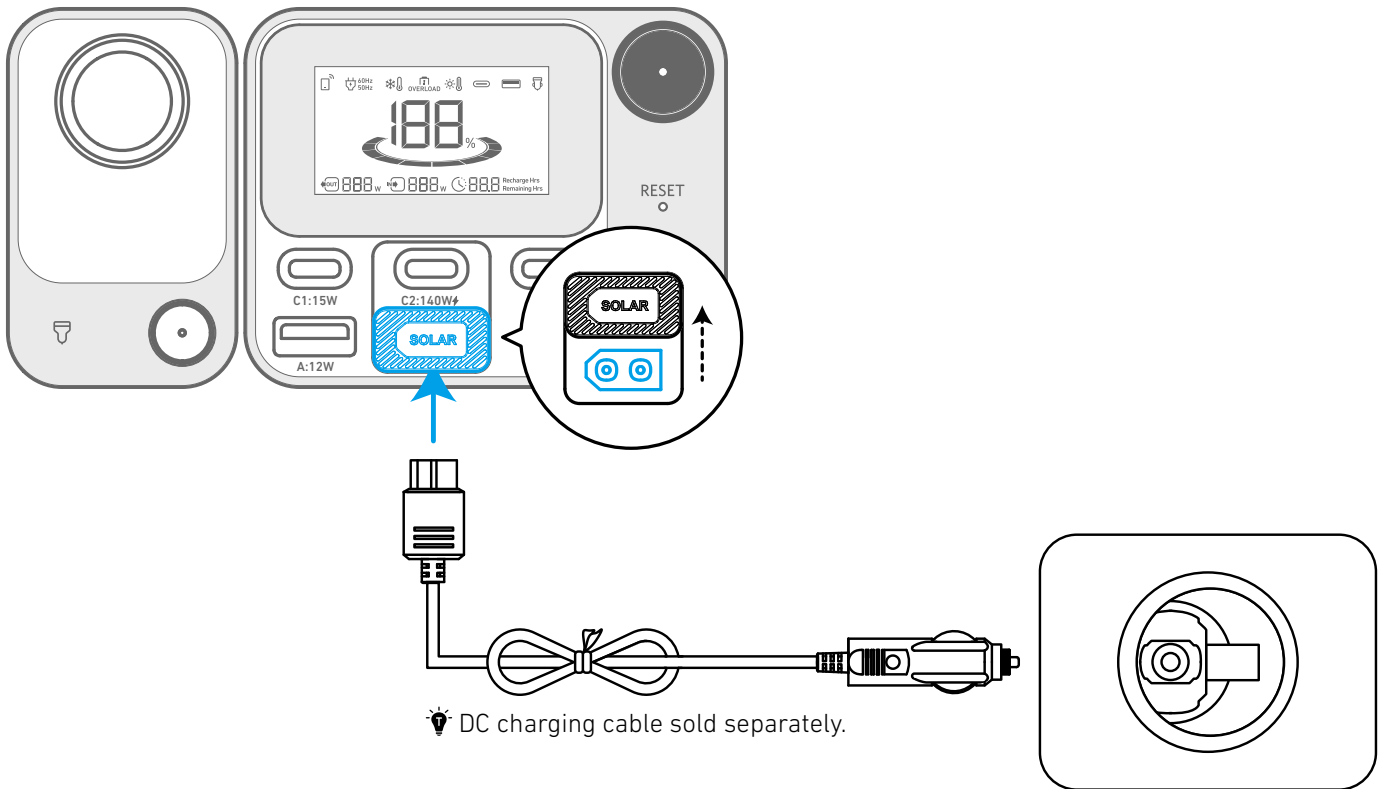


💡 USB-C cables are sold separately. Use a 140W USB-C cable and 140W adapter for the best charging experience.



DC Recharging

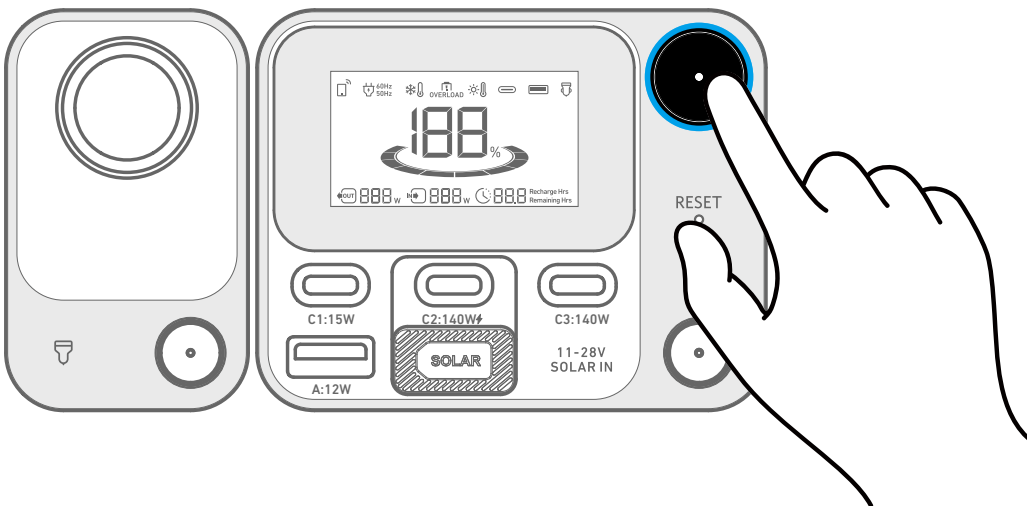
Recharge your power station by connecting to a DC output port with the DC charging cable.



! When your portable power station only has 1% battery remaining, the "Remaining Battery" indicator will flicker to remind you to recharge.

Powering Your Device

Power On/Off



Press the main power button for 3 seconds to turn your power station on or off.

When the "Remaining Battery" indicator shows on the LCD screen, your power station is ready to charge devices.

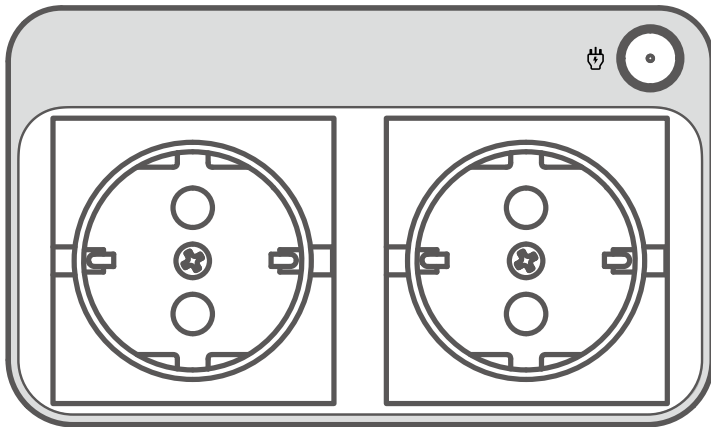
- When powered on, press the main power button to turn the screen on or off.
- The screen will automatically turn off after 15 seconds of lighting up. The auto-off time can be set in the Anker app.
- The power station will power off automatically if the output buttons are turned off and no power loads are detected for 2 hours. The standby duration can be set in the Anker app. We recommend not setting this to "never," so that the product can shut down on its own and save power in a long-term unused state.



AC Charging

Press the AC outlet button and connect your device with the AC output ports.

The AC outlets can intelligently identify whether a plug is inserted. This helps prevent power waste by automatically turning off the power station if no plug is detected for more than 15 minutes.



USB Charging

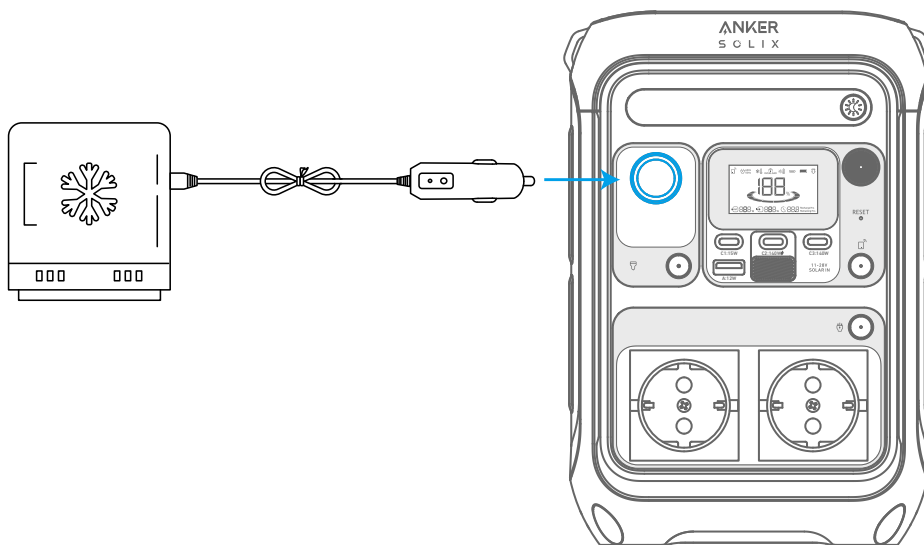
Connect your devices to the USB ports.

Note: The USB-C2 and USB-C3 output ports are a PS3 classification. There is a risk of fire when connecting additional equipment to the USB-C ports; safeguards against fire in the connected equipment or accessories should be considered. Only connect your portable power station to equipment or accessories that comply with clauses 6.3, 6.4 and 6.5 of IEC/EN IEC/BS EN IEC 62368-1 standards. Additionally, use a USB-C 5A cable to achieve maximum power (20VDC/5A, 100W; 28VDC/5A, 140W).



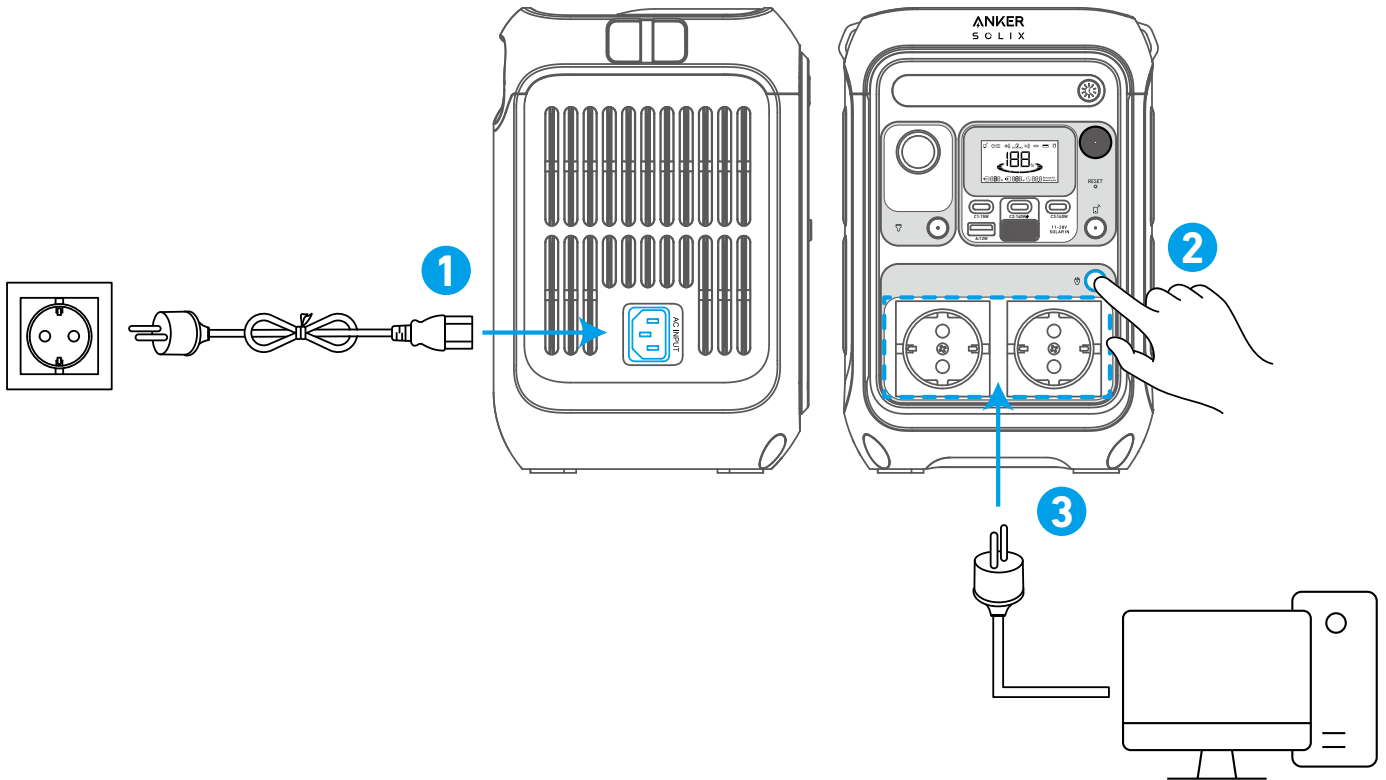
Car Socket Charging

Turn on the car socket and connect your devices to start charging.



Uninterruptible Power Supply (UPS)

To use the UPS feature, connect your power station to a wall outlet with the AC charging cable, then press the AC outlet button and connect your devices via the AC output ports. UPS supports 10ms.



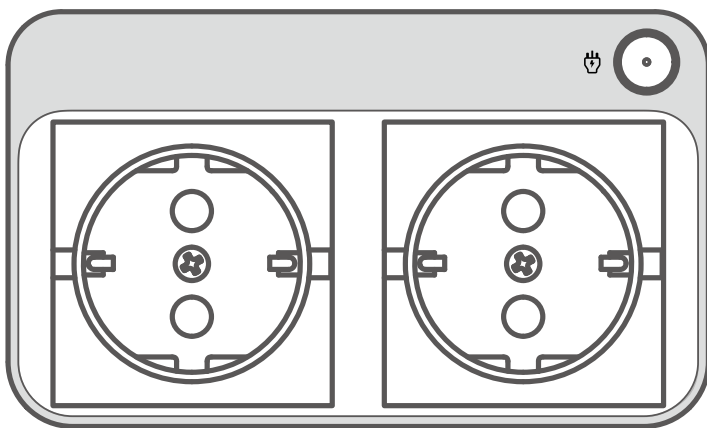
SurgePad™

Anker SOLIX C300 Portable Power Station supports the SurgePad™ feature for up to 600W AC output.

SurgePad™ automatically turns on when the total output exceeds the rated output, allowing the power station to deliver rated power to high-wattage devices.

SurgePad™ does not function in bypass mode (when the power station is being charged with the AC output on).

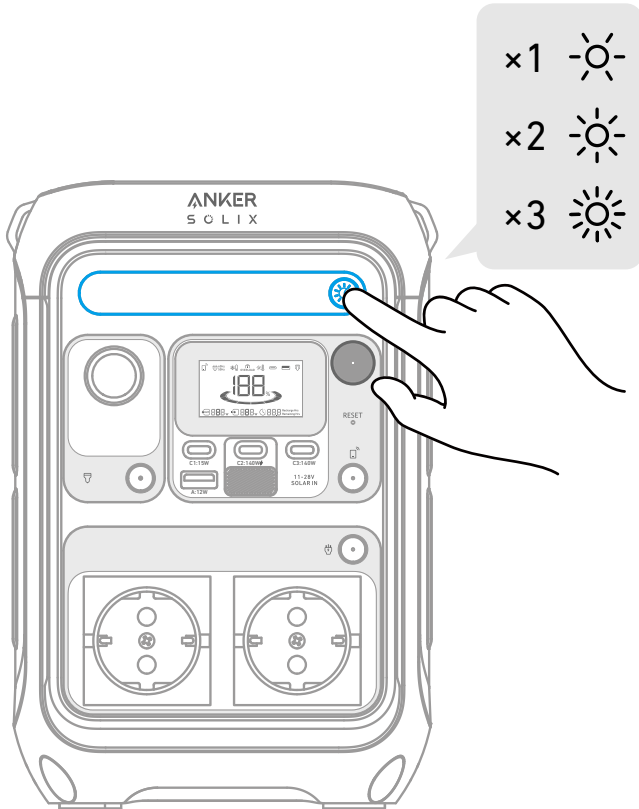
SurgePad™ works better with devices that generate heat, but does not support precision instruments and other devices that have voltage protection or strict voltage requirements. To see if SurgePad™ works with your high-wattage devices, try powering them with the power station.



Light

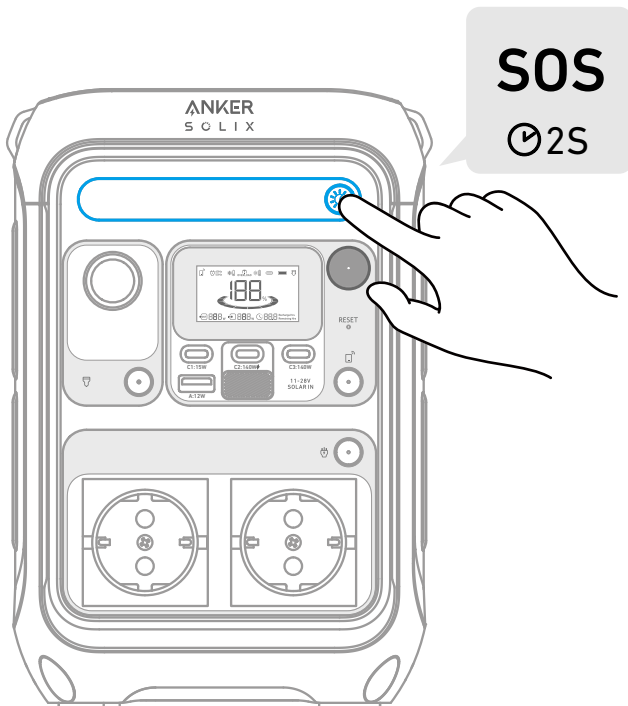
Ambient Light

Press the button once to turn on the ambient light, and press again up to 2 times to switch between brightness levels.

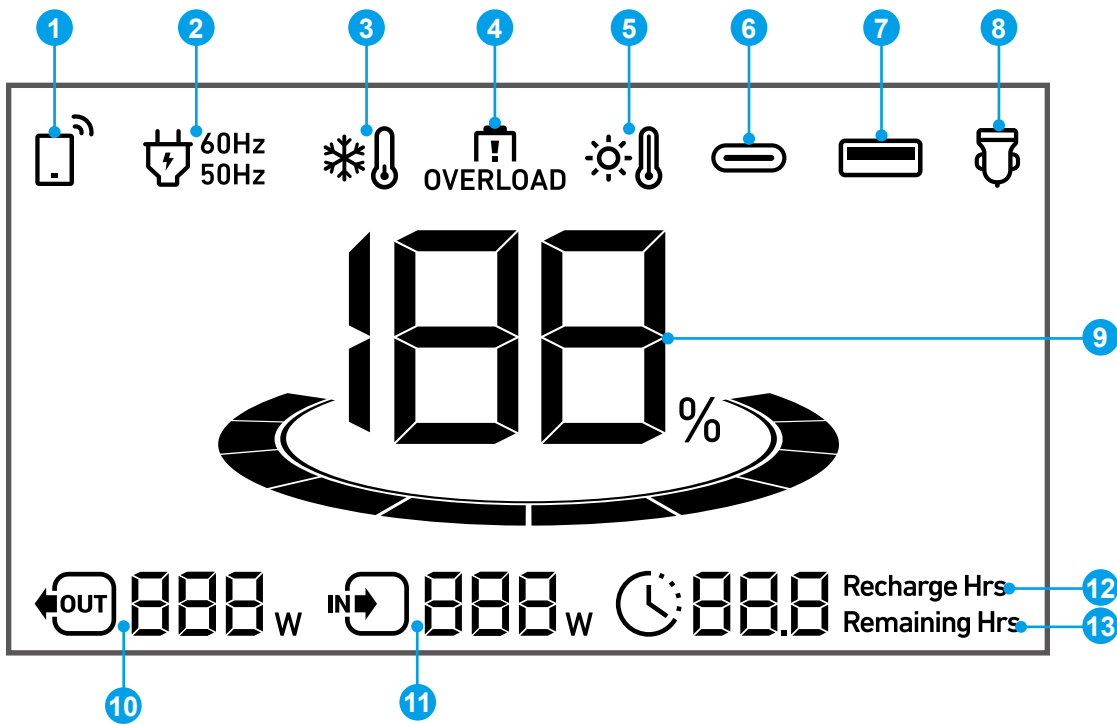


SOS Mode

Hold the button for 2 seconds to turn on SOS mode.



LCD Screen Guide



Press the IoT button once to turn on Bluetooth and Wi-Fi, and connect your devices through the app when this icon appears on the screen.

Press the IoT button for 2 seconds to turn off Bluetooth and Wi-Fi.

Press the IoT button for 7 seconds to reset Bluetooth and Wi-Fi.



AC Charge and Voltage Frequency

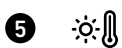


Low-Temperature Alert: When this icon shows, stop using the power station until the icon disappears.



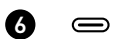
Overload Warning:

This icon appears when a port is overloaded. The port will be turned off to avoid any damage. Please remove the device causing overload.



High-Temperature Alert:

When this icon shows, stop using the power station and let it cool down until the icon disappears.



USB-C Input/Output Port



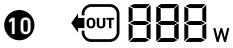
USB-A Output Port



Car Charging



Remaining Battery for Power Station



Current Output Power



Current Input Power



Estimated Time to Fully Recharge

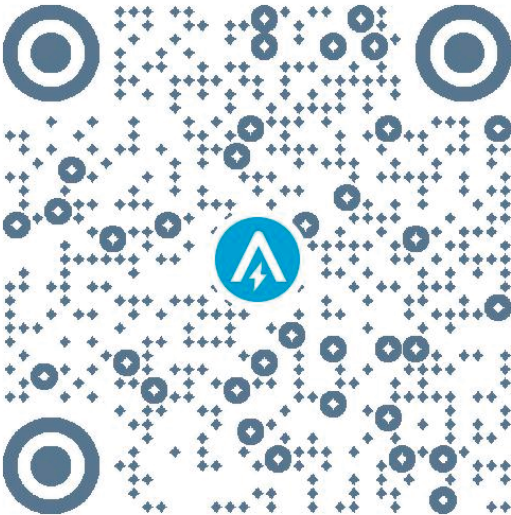


Estimated Time for Battery to Deplete

The Anker App for Smart Control

You can remotely control your power station using the Anker app.

1. Download the Anker app from the App Store (iOS devices) or Google Play (Android devices), or by scanning the QR code.



2. Connect the device to a network before using the app for the first time. After connecting successfully, you can connect your device off-grid.

3. **Firmware update:** You will be informed once a new firmware version is detected when you connect the power station to the app. During the update, ensure the power station is AC charged and connected to Wi-Fi or Bluetooth.

Install Firmware Update

You will receive a notification before updates are installed. Your power station must be charging and connected to Wi-Fi to complete the update.

FAQ

Q1: What is the max power output of the AC output ports?

The AC output ports can deliver a maximum of 300W rated power to connected devices. It can also support up to 600W with SurgePad™.

Q2: Can Anker SOLIX C300 Portable Power Station power a CPAP machine?

Yes.

Q3: What should I do when using a solar charger to charge Anker SOLIX C300 Portable Power Station?

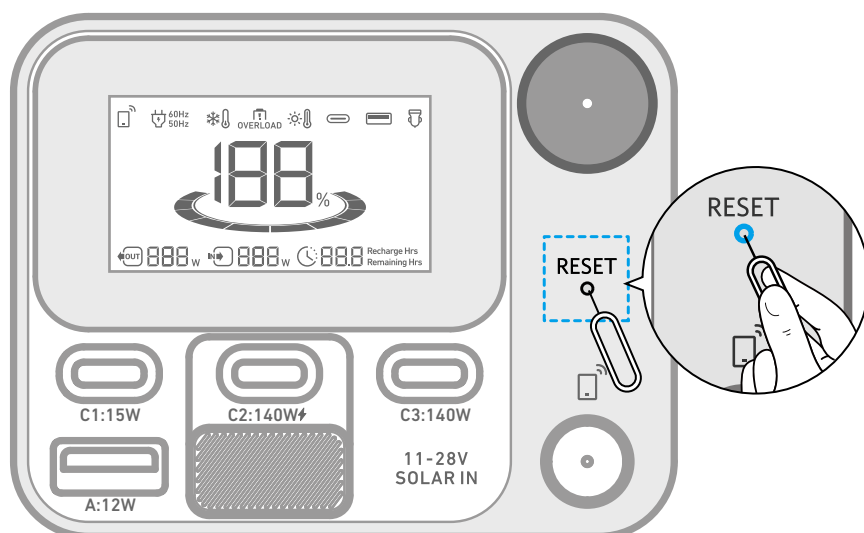
The solar input supports an 11-28V solar charger with an XT-60 connector. We recommend using Anker 100W/60W Solar Panel for the best compatibility.

Q4: Can the USB-C ports be used to charge Anker SOLIX C300 Portable Power Station (input only) or are they output only?

The USB-C1 and USB-C3 ports are output only. The USB-C2 supports output and input.

Q5: How do I reset Anker SOLIX C300 Portable Power Station?

If your power station isn't working correctly, insert a paper clip or pin into the reset hole for 1 second for a factory reset. If the power station still doesn't work, please contact support@anker.com.



Q6: Why is the power station not working after it hasn't been used for a long time?

If the power station is stored at a low capacity for a long time, lithium batteries will self-consume power which may lead to a quick discharge. This often leads to poor conductivity and a reduced battery lifespan that causes the battery not to work.

Q7: How should I store and maintain the power station?

When storing your portable power station, please make sure that you:

- 1) Turn off the main power button.
- 2) Store the power station in a dry and cool environment.
- 3) Check the remaining battery capacity each week. If the battery level is below 30%, fully charge the power station. Don't forget to charge it to 100% once every 3 months.

Q8: Does the power station have to be used upright?

Yes, the product needs to be used and stored upright.

Specifications

Cell Capacity	288Wh
AC Input Voltage	220V-240V~ 2.0A Max, 50Hz/60Hz, L+N+PE
AC Input Power (Charging)	330W Max
AC Input Power (Bypass Mode)	380W Max
Solar Panel Input	11-28V~8.2A (100W Max)
USB-C2 Input	9V~3A / 15V~3A / 20V~5A / 28V~5A (140W Max)
Car Charger Output	12V~10A
AC Output (Inverter Mode)	230V~ 1.31A, 50Hz, 300VA/300W Max
AC Output (Bypass Mode)	220V-240V~ 1.37A, 50Hz/60Hz, 300VA/300W Max
USB-A Output	5V~2.4A (12W)
USB-C1 Output	5V~3A (15W)
USB-C2 Output	5V~3A / 9V~3A / 15V~3A / 20V~5A / 28V~5A (140W Max)
USB-C3 Output	5V~3A / 9V~3A / 15V~3A / 20V~5A / 28V~5A (140W Max)
USB-A and USB-C1 Total Output	5V~4A (20W Max)
Total Output	360W
UPS	<10ms
Discharging Temperature	-20°C-40°C / -4°F-104°F
Charging Temperature	0°C-40°C / 32°F-104°F
Size	16.4*16.1*24.0 cm / 6.5*6.3*9.5 in
Net Weight	4.13 kg / 9.1 lb